

# Heartland Presbyterian Church

## International Mission Committee

### Committee Members

Chair: Eddie Ellis, Secretary/Treasurer: Trisha Vander Wilt, Scott Valentine, Mark Davis, Bill Fischer, Kathy Mahler

### 2007 Accomplishments

#### El Tablon Cerna

- Purchased the land for the El Tablon Cerna school and titled in the community name
- Began building relationship with in-country director of Seeds of Learning organization in efforts to partner and get assistance with the building the school in El Tablon Cerna
- Celebrated with the residents of El Tablon Cerna for organizing and getting the directiva approved and finalized. This process normally takes 2-3 years and they accomplished in less than a year.
- Discussed Five Year Plan with El Tablon Cerna to establish priorities with the community

#### El Tablon Arriba

- Funded the 7th, 8th, and 9th grade teachers in El Tablon Arriba
- Re-established communication with directiva in El Tablon Arriba after various political issues
- Documented needs and solicited the Ministry of Education for them to take over the funding of Arriba teachers

#### Committee

- Improved financial management of the committee to better understand how effective we use the church's money and where we spend the money
- Re-structured the committee with new roles and responsibilities to be more effective and add the opportunity for more individuals who are not interested in traveling outside the country but still want to be involved in local advocacy

#### Walk in Solidarity with the Community

- Picked coffee to learn the realities of the work that a large portion of the people their community do for a living
- Visited with individual families to help with everyday chores
- Visited La Quiserra – massacre site near Berlin – a site where many people were killed
- Visited and built relationship with thirty families from River Torrolo who will be displaced after a new dam is built

#### 2007 Financial Contributions/ Expenses to El Salvador

- College Scholarships \$2,800
- Teacher Salaries \$7,700
- Land and legal fees for school in Cerna \$3,125

### 2007 Delegations

*The Delegation trips are focused on walking in solidarity with our brothers and sisters in El Salvador, supporting and continuing our mission projects in El Tablon and Cerna and create awareness of the importance of international mission work with members of our Heartland community.*

#### Monday, January 8 – Sunday, January 14, 2007

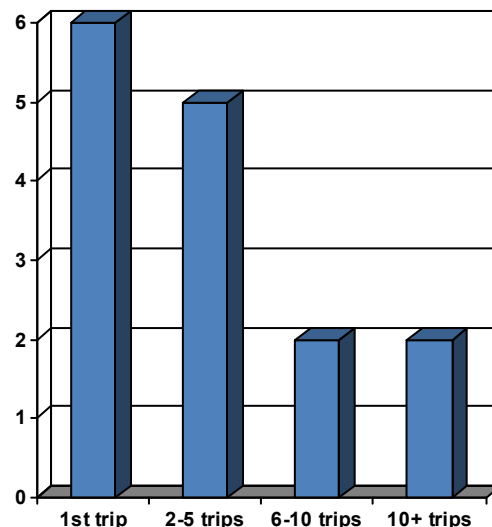
- Scott Valentine (9th visit)
- Kathy Mahler (10th visit) \*\* 7 with Heartland and 3 alone
- Scott Splavec (2nd visit)
- Graham Giles (1st visit)
- Aubrey Ketcham (2nd visit)
- Kelley Bowermaster (1st visit)
- Michael Splavec (1st visit)

#### Thursday, April 12 – Friday, April 20, 2007

- Eddie Ellis (10<sup>th</sup> visit)
- Trisha Vander Wilt (2<sup>nd</sup> visit)
- Angela Van Riessen (1<sup>st</sup> visit)

#### Tuesday, June 26 – Tuesday July, 3, 2007

- Diane Cutler (2nd visit)
- Chuck Cutler (1st visit)
- Trisha Bruecken (1st visit)
- Mark Davis (7th visit)
- Mickey Davis (2nd visit)
- Scott Valentine (11th visit)



For more information, please contact Trisha Vander Wilt (515) 250-7668, vandert3@nationwide.com